

507-896-7325 Cushion's Peak Campground
 Tom & Judy
 between Houston & Rushford on 16.

Canoe Launch
 To Sandbar



Parking

No Vehicle Traffic

Root River

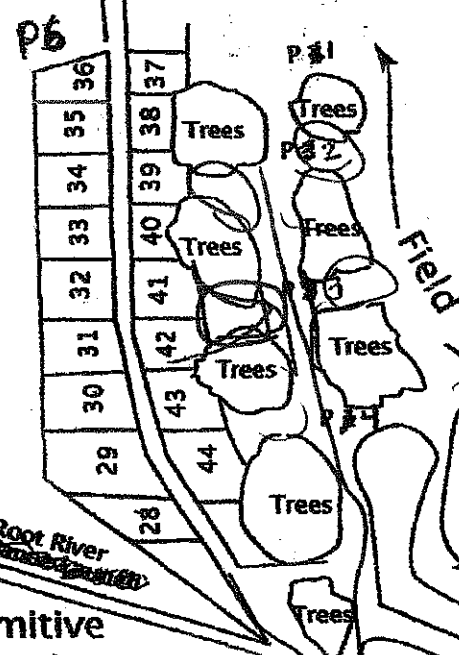
Lloyd's Landing

Primitive Camping



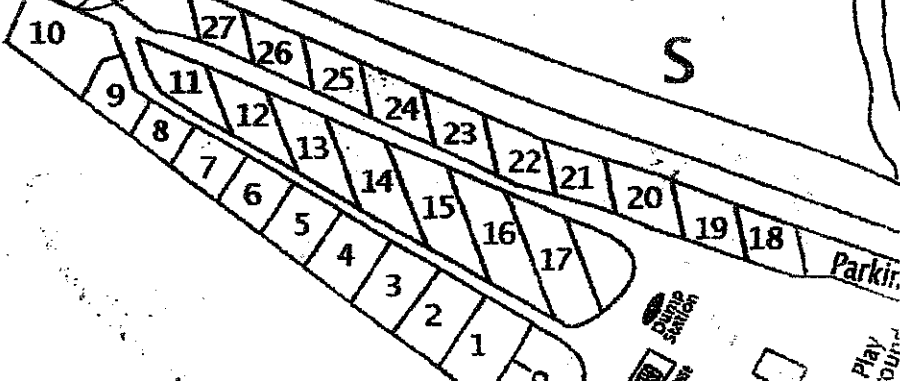
Large Group
 Tent's
 Units - Electric
 no water

* Map not to scale!



Small Group
 4-5
 Primitive Camping
 (1 Lane Road)

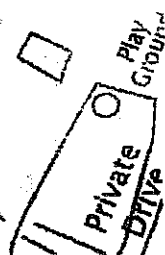
Cushion's Peak
 Camp Ground



Walking Trail
 To Small Group
 Root River
 *Walking Only

To Bike Trail

Office/Registration
 Desk



Bike Trail

Bike Trail
 Stop For Bikers